

Automotive

PANNEL COVER.

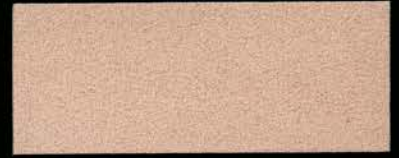

ALCANTARA[®]
EXTRAORDINARY, EVERY DAY.



2911 perlweiß



1125 (2970) karamell



1510 perlrosa



2984 helios



2940 moccasin



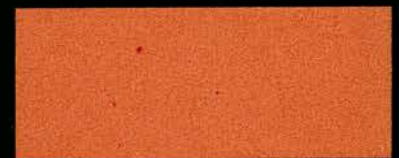
1108 sand rose



2901 champignon



4914 sienna



2969 mango



2909 natur hell



2930 haselnuß



4996 rot



1110 amber glow



4097 rust



2916 rubin



2974 java



2910 schoko



9076 weinrot



1112 (2920) pergament



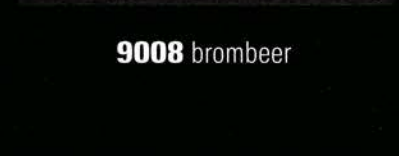
6833 raw amber



9036 aubergine



9500 dunkelbraun



9008 brombeer



2932 mausgrau



1041 zartgrün



4978 silbergrau hell



4175 hellblau



1045 linde



2934 oriongrau



9022 tobago



1452 (2951) lemongelb



2938 basalt



7586 kobalt



3322 kaki



2942 sandgrau



6408 (9055) signalblau



2156 mint



2957 schiefer



9041 stahlblau



9073 smaragd



9052 dunkelgrau



9980 tiefblau



6406 tiefgrün

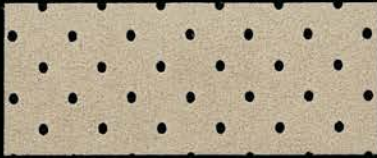


9002 schwarz

Alle nicht perforierten Farben sind in den Qualitäten cover und pannel lieferbar.

9040 tiefschwarz

Lochperforation/
Round perforation



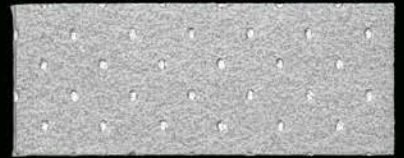
2974.B1 java

Kästchenperforation/
Square perforation

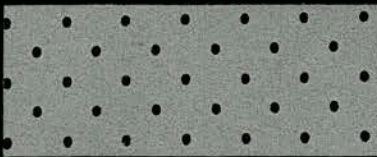


2974.S2 java

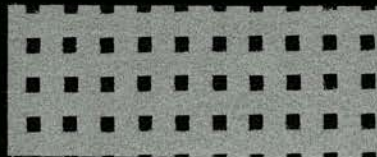
Starlite/
Round perforation



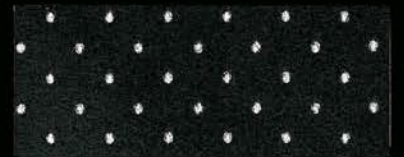
4978.STL silbergrau hell



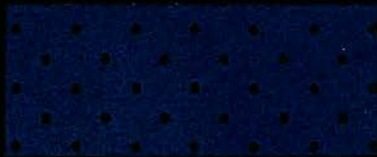
2934.B1 oriongrau



2934.S2 oriongrau



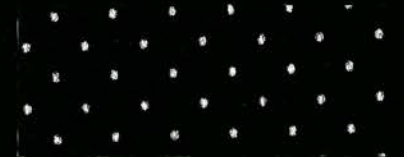
9052.STL dunkelgrau



6408.B1 signalblau



6408.S2 signalblau



9040.STL tiefschwarz



9002.B1 schwarz



9002.S2 schwarz

Alle anderen Farben in jeder Perforation lieferbar ab 50 lfm/
all other colours in each perforation deliverable from 50 m



UNI EN ISO 14001:2004



UNI EN ISO 9001:2000
ISO/TS 16949:2002



Tested for harmful substances
according to Deko-Text Standard 100

No 99.0.9791 for NON FR
FI Hohenstein products only

Alcantara® Pannel

			5012	5256	
COMPOSITION	ALCANTARA®	POLYESTER	68	68	%
		POLYURETHANE	32	32	%
	FR content/Alcantara®			25	%
THICKNESS			0,83	0,85	mm
UNIT WEIGHT		UNI EN 29073-1	230	285	g/m ²
WIDTH			≥ 142	≥ 142	cm
BREAKING LOAD	lengthwise	UNI EN 29073-3	≥ 220	≥ 220	N
	transversal	UNI EN 29073-3	≥ 170	≥ 170	N
WEAR RESISTANCE	martindale	UNI EN ISO 12947-1/2/3/4	≥ 30,000	≥ 30,000	cycles [*]
			≥ 150,000	≥ 150,000	cycles ^{**}
COLOUR FASTNESS					
TO LIGHT	xenotest Beta	VDA 75202 (2 FAKRA)	≥ 3	≥ 3	grey scale
TO RUBBING	dry	UNI EN ISO 105-X12	≥ 4	≥ 4	white scale
	wet	UNI EN ISO 105-X12	≥ 3/4	≥ 3/4	white scale
FR VERSION	fire resistance	FMVSS 302		< 100	mm/min

* no significant change in surface appearance.

** end point

Alcantara® Pannel is also available in the version Flame Retardant (FR), comply with the directive 95/28 CE.

FR product code: 5256

Alcantara® Cover

			5205	5267	
COMPOSITION	ALCANTARA®	POLYESTER	68	68	%
		POLYURETHANE	32	32	%
	backing	POLYESTER	65	65	%
		COTTON	35	35	%
		FR content/Alcantara®		25	%
THICKNESS			≥ 0,95	≥ 0,95	mm
UNIT WEIGHT		UNI EN 29073-1	≥ 325	≥ 400	g/m ²
WIDTH			≥ 142	≥ 142	cm
BREAKING LOAD	lengthwise	UNI EN 29073-3	≥ 700	≥ 700	N
	transversal		≥ 400	≥ 400	N
WEAR RESISTANCE	(martindale)	UNI EN ISO 12947-1/2/3/4	≥ 30,000	≥ 30,000	cycles*
			≥ 150,000	≥ 150,000	cycles**
COLOUR FASTNESS					
TO LIGHT	xenotest beta	VDA 75202 (2 FAKRA)	≥ 3	≥ 3	grey scale
TO RUBBING	dry	UNI EN ISO 105-X12	≥ 4	≥ 4	white scale
	wet	UNI EN ISO 105-X12	≥ 3/4	≥ 3/4	white scale
COESION		UNI EN ISO 2411	≥ 10	≥ 10	N
FR VERSION	fire resistance	FMVSS 302	-	< 100	mm/min

* no significant change in surface appearance.

** end point

Alcantara® Cover is also available in the version Flame Retardant (FR), comply with the directive 95/28 CE.

FR product code: 5267

Wasserlösliche Flecken

Zur Reinigung von Alcantara® wird empfohlen, die dafür vorgesehenen Produkte zu verwenden, deren Liste Sie auf der Website www.alcantara.com unter „Wartung“ finden. Sollten diese Produkte nicht zur Verfügung stehen, wird je nach Fall die Verwendung von Wasser, Zitronensaft oder reinem Ethylalkohol (Weingeist) empfohlen. Die diesbezüglichen Reinigungsverfahren sind nachstehend beschrieben. Für weitere Informationen besuchen sie bitte unsere Website unter www.alcantara.com

Water-soluble stains

It is recommended that you use the specific products for Alcantara® cleaning, a list of which is available on www.alcantara.com in the section maintenance; if they are not at your disposal, it is recommended, depending on the type of stain, that you should use water, lemon juice, or pure ethyl alcohol (from liquors) and follow the instructions below. For further information visit our web site www.alcantara.com

Tâches solubles dans l'eau

Il est conseillé d'utiliser des produits spéciaux pour le nettoyage d'Alcantara®, dont vous trouverez la liste sur le site www.alcantara.com dans la section entretien. A défaut de produits, il est préférable d'utiliser, selon le cas, de l'eau ou du jus de citron, ou encore de l'alcool éthylique pur (pour liqueurs) et suivre les procédures indiquées ci-dessous. Pour plus d'information, merci de visiter notre site internet www.alcantara.com

Macchie solubili in acqua

E' consigliato l'impiego di prodotti specifici per la pulizia di Alcantara®, un elenco dei quali è riportato nel sito www.alcantara.com nella sezione manutenzione; nel caso non si disponga di questi, è consigliato a secondo dei casi, l'impiego di acqua, oppure succo di limone, oppure alcol etilico puro (da liquori) e seguendo le procedure di seguito indicate. Per maggiori dettagli visita il nostro sito web www.alcantara.com

Fruchtsäfte, Marmelade, Gelatine, Sirup, Ketchup.	Mit lauwarmem Wasser auswaschen und mit sauberem Wasser ausspülen und abtupfen.
Blut, Eier, Kot und Urin.	Mit kaltem Wasser auswaschen. Warmes Wasser, das diese Substanzen gerinnen lässt, sollte vermieden werden. Mit sauberem Wasser ausspülen und abtupfen.
Liköre, Wein, Bier, Cola und Tee.	Mit lauwarmem Wasser auswaschen. Farbige Flecken sollten mit Zitronensäure behandelt werden. Gut ausspülen.
Kopierstift, Kakao, Schokolade, Creme- und Schokoladen-süßigkeiten, Eis, Senf.	Mit lauwarmem Wasser auswaschen. Mit sauberem Wasser ausspülen und abtupfen.
Essig, Haargel, Tomatensoße, gezuckerter Kaffee.	Mit Zitronensäure behandeln und mit lauwarmem Wasser auswaschen. Mit sauberem Wasser ausspülen und abtupfen.
Fruit juice, jam, jelly, syrup, ketchup.	Use lukewarm water, rinse by dabbing with clean water.
Blood, egg, excrement, urine.	Use cold water; avoid warm water because it makes these substances coagulate, rinse by dabbing with clean water.
Liquors, alcoholic beverages, wine, beer, coke and tea.	Use lukewarm water, if the colour mark remains, treat it with lemon juice and then rinse it well.
Copying pencil, cocoa, chocolate, pastry with cream or chocolate, ice-cream, mustard.	Use lukewarm water, rinse by dabbing with clean water.
Vinegar, hair gel, tomato juice, coffee with sugar.	Use lemon juice and then wipe with lukewarm water, rinse by dabbing with clean water.
Jus de fruit, confiture, gélatine, sirop, ketchup.	Utilisez de l'eau à peine tiède; rincez en tamponnant avec de l'eau claire.
Sang, œuf, selles et urines.	Utilisez de l'eau froide; évitez l'eau chaude qui pourrait faire coaguler ces substances; rincez en tamponnant avec de l'eau propre.
Liqueurs, vin, bière, cola et thé.	Utilisez de l'eau à peine tiède; si la tâche résiste, traitez-la avec du jus de citron et rincez abondamment.
Crayon à encre, cacao, chocolat, gâteaux à la crème et au chocolat, glace, moutarde.	Utilisez de l'eau à peine tiède; rincez en tamponnant avec de l'eau propre.
Vinaigre, gel pour cheveux, sauce tomate, café sucré.	Utilisez du jus de citron puis repassez avec de l'eau à peine tiède; rincez en tamponnant avec de l'eau propre.
Succo di frutta, marmellata, gelatina, sciroppo, ketchup.	Usare acqua appena tiepida; risciacquare tamponando con acqua pulita.
Sangue, uovo, feci e urina.	Usare acqua fredda; evitare l'acqua calda che fa coagulare queste sostanze; risciacquare tamponando con acqua pulita.
Liquori alcolici, vino, birra, coca e the.	Usare acqua appena tiepida; se resta la chiazza di colore trattarla con succo di limone e poi sciacquare bene.
Matita copiativa, cacao, cioccolata, dolci alla crema e al cioccolato, gelato, senape.	Usare acqua appena tiepida; risciacquare tamponando con acqua pulita.
Aceto, gel per capelli, salsa di pomodoro, caffè con zucchero.	Usare succo di limone e poi ripassare con acqua appena tiepida; risciacquare tamponando con acqua pulita.

EXTRAORDINARY, EVERY DAY.

Authorized Distributor



Hans Reinke Handelsgesellschaft mbH
Brandstücken 20, 22549 Hamburg
Telefon +49 (0)40/39 10 68 - 0
Fax +49 (0)40/39 10 68 - 29
E-Mail: info@hans-reinke.com
<http://www.hans-reinke.com>


ALCANTARA[®]

Via Mecenate, 86 - 20138 Milano, Italy
Tel: +39 02 580301 - Fax: +39 02 58030451
info@alcantara.com - www.alcantara.com

Alcantara[®]
is a registered trademark
of Alcantara S.p.A.